

Vacuum Stand Base | VRCA

Vacuum Stand Clamps | VRC

VRCA

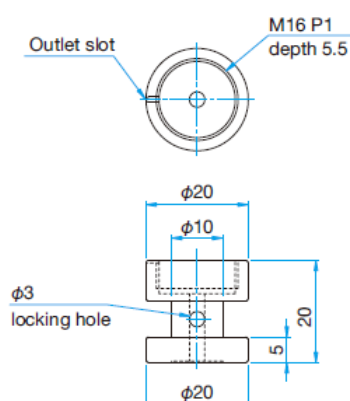
NEW
RoHS
Catalog Code
W6106


Low out-gas stand base/clamp for fixing the post holders in the high vacuum chamber.

- By using in combination with vacuum stand clamps (VRC), the vacuum post holders can be positioned at an arbitrary position.
[WEB Reference](#) [Catalog Code](#) W6105
- Screw hole grooving and vent hole processing are applied to prevent the out-gas emits when forming vacuum.
- You can compactly make positioning the holders of the post holders close to each other.

Outline Drawing

VRCA-M16



Guide

- ▶ We deliver the item with specialized vacuum packaging to keep its high clean state from the factory to the destination.
- ▶ We provide vacuum optical baseplates (VOBC) for fixing the post holders. [WEB Reference](#) [Catalog Code](#) W6102

Attention

- ▶ Please open the package in the clean environment. Please do not touch it by your bare hands.

Specifications		Primary material: Steel (SUS316L) Finish: None	
Part Number	Compatible Post Holder	Compatible Stand Clamp	Weight [kg]
VRCA-M16	VRS-12	VRC-10	0.023

VRC

NEW
RoHS
Catalog Code
W6105


Low out-gas stand clamps for fixing vacuum stand bases.

- The slotted hole and vacuum M6 screws make it possible to fix it in the optimal position.
- If screws are tightened, stand bases are pressed firmly to the breadboards by leverage and the stand bases will be fixed.

Attention

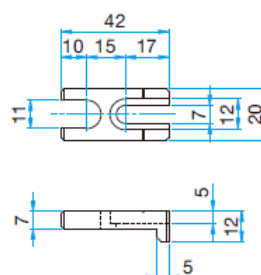
- ▶ Screws are not included. Please prepare vacuum screws (VPCB/VAGB). [WEB Reference](#) [Catalog Code](#) W6111
- ▶ Please open the package in the clean environment. Please do not touch it by your bare hands.

Specifications		Primary material: Steel (SUS316L) Finish: none	
Part Number	Compatible Stand Base	Weight [kg]	Compatible Mounting Screw Number
VRC-10-17	VRCA-M16	0.027	VPCB-6-16
VRC-10-25	VRCA-M16	0.031	or VAGB-6-16

Outline Drawing

VRC-10-17/25

SUS Stainless steel washers...1 screw



Part Number	A (mm)
VRC-10-17	17
VRC-10-25	25



Tokyo Head Office
 5F, SIGMA KOKI Tokyo Head office 1-19-9,
 Midori, Sumida-ku, Tokyo, 130-0021, JAPAN
 TEL. +81-3-5638-8228
 FAX. +81-3-5638-6550
 E-mail international@sigma-koki.com

Osaka Branch
 4-9-28 Nishi-Nakajima,
 Yodogawa-ku, Osaka 532-0011
 TEL. +81-6-6307-4835
 FAX. +81-6-6307-4834
 E-mail sales.osaka@sigma-koki.com

Kyushu Sales Office
 3-17 Hie-machi, Hakata-ku, Fukuoka 812-0014
 TEL. +81-92-481-4300
 FAX. +81-92-481-4310
 E-mail sales.kyushu@sigma-koki.com