

# Vacuum Pedestal Bases | VPST/VPSM Vacuum Pedestal Clamps | VPSCS

## VPST/VPSM

NEW

RoHS

Catalog Code

W6108



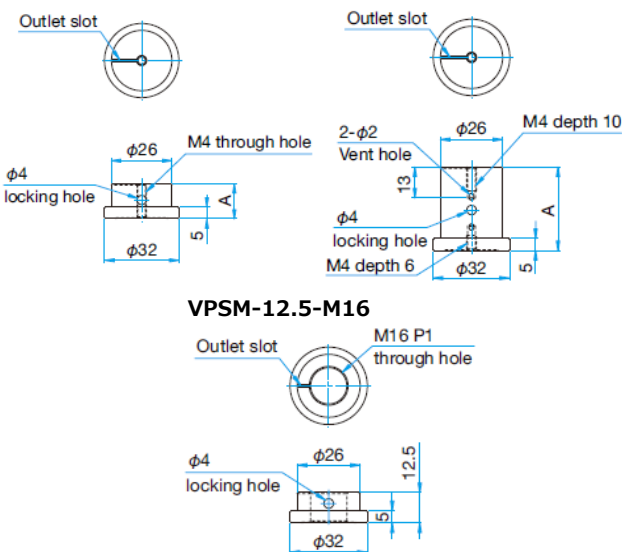
**Low out-gas pedestal bases for supporting vacuum mirror holders and lens holders.**

- By using in combination with vacuum pedestal clamps (VPSCS), the pedestal bases can be positioned at an arbitrary position. [WEB Reference](#) [Catalog Code](#) W6104
- Screw hole grooving and vent hole processing are applied to prevent the out-gas emits when forming vacuum.
- Separately sold parts, vacuum screw (VSC/VCHS) can fix the M6 installing holders or M4 installing holders. [WEB Reference](#) [Catalog Code](#) W6110
- VPSM can connect the vacuum post holders (VRS-12) and can be fixed by pedestal clamps (VPSCS). [WEB Reference](#) [Catalog Code](#) W6100

### Outline Drawing

#### VPST-12.5/15/20

#### VPST-25/30/35/40/45



### Guide

- ▶ We deliver the item with specialized vacuum packaging to keep its high clean state from the factory to the destination.
- ▶ We provide vacuum optical baseplates (VOBC) for fixing the post holders. [WEB Reference](#) [Catalog Code](#) W6102

### Attention

- ▶ Please open the package in the clean environment. Please do not touch it by your bare hands.

Specifications			Primary material: Steel (SUS316L) Finish: None	
Part Number	Height A [mm]	Weight [kg]		
VPST-12.5	12.5	0.065		
VPST-15	15	0.07		
VPST-20	20	0.08		
VPST-25	25	0.1		
VPST-30	30	0.12		
VPST-35	35	0.15		
VPST-40	40	0.17		
VPST-45	45	0.19		
VPSM-12.5-M16	12.5	0.045		

## VPSCS

NEW

RoHS

Catalog Code

W6104



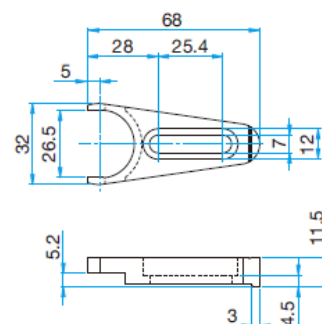
**Pushing tool for fixing the vacuum pedestal bases to the optical baseplates.**

- Long hole and vacuum M6 screw helps fixing in the optimal position.
- If screws are tightened, pedestal bases are pressed firmly to the optical baseplates by leverage and the pedestal bases will be fixed.

### Outline Drawing

#### VPSCS-11.5

SUS Stainless steel washers...1 screw



### Attention

- ▶ Screws are not included. Please prepare vacuum screws (VPCB/VAGB). [WEB Reference](#) [Catalog Code](#) W6111
- ▶ Please open the package in the clean environment. Please do not touch it by your bare hands.

Specifications			Primary material: Steel (SUS316L) Finish: None	
Part Number	Weight [kg]	Compatible Mounting Screw Number		
VPSCS-11.5	0.06	VPCB-6-12 or VAGB-6-12		



**Tokyo Head Office**  
5F, SIGMA KOKI Tokyo Head office 1-19-9,  
Midori, Sumida-ku, Tokyo, 130-0021, JAPAN  
TEL. +81-3-5638-8228  
FAX. +81-3-5638-6550  
E-mail international@sigma-koki.com

**Osaka Branch**  
4-9-28 Nishi-Nakajima,  
Yodogawa-ku, Osaka 532-0011  
TEL. +81-6-6307-4835  
FAX. +81-6-6307-4834  
E-mail sales.osaka@sigma-koki.com

**Kyushu Sales Office**  
3-17 Hie-machi, Hakata-ku, Fukuoka 812-0014  
TEL. +81-92-481-4300  
FAX. +81-92-481-4310  
E-mail sales.kyushu@sigma-koki.com