

# Vacuum Base Plate | VBSP

## Vacuum Base Clamps | VBSC

### VBSP

NEW

RoHS

Catalog Code

W6101



#### Low out-gas base plates for fixing vacuum holders and vacuum stages in the optical baseplates.

- Long cut out hole enables the smooth base plate positioning and helps fixing in the optimal position.
- Screw hole grooving and vent hole processing are applied to prevent the out-gas emits when forming vacuum.
- Besides the post holders, 25mm and 40mm stainless stages (TSDS-251, TSDS-401) can be fixed. [WEB Reference](#) [Catalog Code](#) W7005

#### Guide

- ▶ We deliver the item with specialized vacuum packaging to keep its high clean state from the factory to the destination.
- ▶ We provide vacuum optical baseplates (VOBC) for fixing the post holders. [WEB Reference](#) [Catalog Code](#) W6102

#### Attention

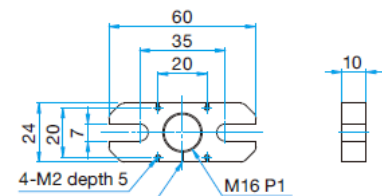
- ▶ Screws are not included. Please prepare vacuum screws (VPCB/VAGB). [WEB Reference](#) [Catalog Code](#) W6111
- ▶ Please open the package in the clean environment. Please do not touch it by your bare hands.

Specifications		
Primary material: Steel (SUS316L) Finish: None		
Part Number	Weight [kg]	Compatible Mounting Screw Number
VBSP-2460	0.078	VPCB-6-20 or VAGB-6-20
VBSP-40100	0.260	

#### Outline Drawing

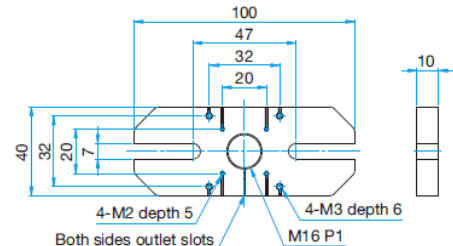
##### VBSP-2460

SUS Stainless steel washers...2 screw



##### VBSP-40100

SUS Stainless steel washers...2 screw



### VBSC

NEW

RoHS

Catalog Code

W6103



#### Low out-gas base clamps for fixing vacuum optical baseplates and vacuum base plate to the tables in the high vacuum chamber.

- Long hole and vacuum M6 screw enables fixing the 10mm thickness plates in the optimal position.
- If screws are tightened, plates are pressed firmly to the tables by leverage and the plates will be fixed.

#### Attention

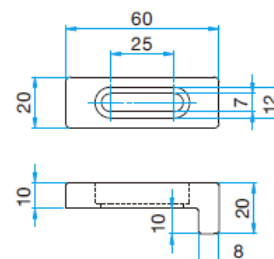
- ▶ Screws are not included. Please prepare vacuum screws (VPCB/VAGB). [WEB Reference](#) [Catalog Code](#) W6111
- ▶ Please open the package in the clean environment. Please do not touch it by your bare hands.

Specifications		
Primary material: Aluminum (A6061) Finish: None		
Part Number	Weight [kg]	Compatible Mounting Screw Number
VBSC-60	0.03	VPCB-6-20 or VAGB-6-20

#### Outline Drawing

##### VBSC-60

SUS Stainless steel washers...1screw



**Tokyo Head Office**  
5F, SIGMA KOKI Tokyo Head office 1-19-9,  
Midori, Sumida-ku, Tokyo, 130-0021, JAPAN  
TEL. +81-3-5638-8228  
FAX. +81-3-5638-6550  
E-mail international@sigma-koki.com

**Osaka Branch**  
4-9-28 Nishi-Nakajima,  
Yodogawa-ku, Osaka 532-0011  
TEL. +81-6-6307-4835  
FAX. +81-6-6307-4834  
E-mail sales.osaka@sigma-koki.com

**Kyushu Sales Office**  
3-17 Hie-machi, Hakata-ku, Fukuoka 812-0014  
TEL. +81-92-481-4300  
FAX. +81-92-481-4310  
E-mail sales.kyushu@sigma-koki.com