

Adapter Plates for Pedestal / Pedestal Spacers Small Pedestal Bases

SP-T / PS-SP
SPS

SP-T

RoHS Catalog Code W6041



Adapter plates attach to the top of Pedestal Bases to adjust the height of an optical system or unit.

- Used in combination with a Pedestal and Pedestal clamp.
- The SP-25T is designed primarily for 25×25mm stages with M2 mounting holes, and the SP-40T is designed primarily for 25×25mm and 40×40mm stages with M2 and M3 mounting holes.

Guide

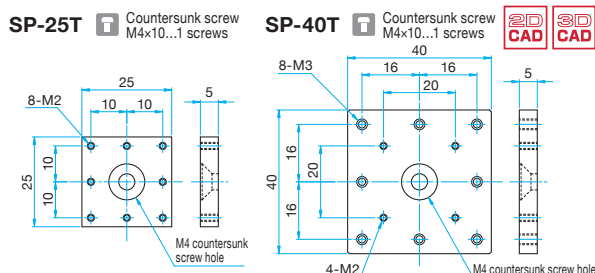
- Use pedestal adapters (PS-SP) to increase the thickness of the pedestal and adapter plate assembly.
Reference D055 WEB Reference Catalog Code W6042
- Custom sizes or shapes not listed in the catalog are available. Contact our Sales Division for more information.

Specifications

Primary material: Aluminum
Finish: Black Anodized

| Part Number | Weight [kg] |
|-------------|-------------|
| SP-25T | 0.009 |
| SP-40T | 0.02 |

Outline Drawing



PS-SP

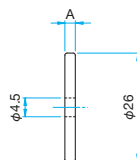
RoHS Catalog Code W6042

Auxiliary spacer plates for pedestal (SP-T). This product enables users to change fine adjustment that cannot be managed with adapter plates for pedestal.



Outline Drawing

PS-SP



Specifications

Primary material: Stainless Steel
Finish: None

| Part Number | A [mm] | Weight [kg] |
|-------------|--------|-------------|
| PS-0.5SP | 0.5 | 0.002 |
| PS-0.8SPUU | 0.8 | 0.003 |
| PS-1SP | 1 | 0.004 |
| PS-1.2SPUU | 1.2 | 0.005 |
| PS-1.6SPUU | 1.6 | 0.006 |
| PS-2SP | 2 | 0.008 |
| PS-2.3SP | 2.3 | 0.01 |
| PS-2.5SPUU | 2.5 | 0.01 |
| PS-3.1SPUU | 3.1 | 0.012 |
| PS-3.5SPUU | 3.5 | 0.014 |
| PS-3.9SPUU | 3.9 | 0.016 |
| PS-4.3SPUU | 4.3 | 0.017 |

Guide

- Custom sizes or shapes not listed in the catalog. Contact our Sales Division for more information.

SPS

RoHS Catalog Code W6079

The small post stand is used for optic mount holders of $\phi 15$ mm or less.

- These posts can be positioned anywhere on a table with the clamp (RC series).
- Posts can be placed directly on the vibration isolator and optical bench.



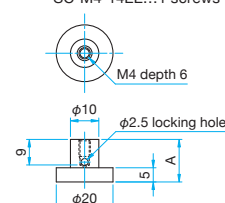
Specifications

Primary material: Stainless Steel
Finish: None

| Part Number | A [mm] | Weight [kg] |
|-------------|--------|-------------|
| SPS-12.5 | 12.5 | 0.01 |
| SPS-15 | 15 | 0.013 |
| SPS-20 | 20 | 0.017 |
| SPS-25 | 25 | 0.023 |
| SPS-30 | 30 | 0.027 |
| SPS-35 | 35 | 0.03 |

Outline Drawing

SPS Dog Point Set Screws SC-M4-14EE...1 screws



Guide

- Stand Base/Stand Clamp
Reference D062 WEB Reference Catalog Code W6081

Application Systems

Optics & Optical Coatings

Opto-Mechanics

Bases

Manual Stages

Actuators & Adjusters

Motorized Stages

Light Sources & Laser Safety

Index

Guide

Vibration Isolation Systems

Optical Tables

Darkrooms/ Dark Boxes

Optical Bases

Posts

Brackets

Adapters

Tools