

Multi Controller Micro-step Driver Box with I/O

SMC
SDB
SMC
Catalog Code W2035
Application Systems
**Optics &
Optical Coatings**
Opto-Mechanics
Bases
Manual Stages
**Actuators &
Adjusters**
MotORIZED Stages
**Light Sources &
Laser Safety**
Index
Microscope Unit
Alignment
Interferometers
**Inspection/
Observation**
Bio-photonics
Laser Processing

Multi controllers developed for controlling alignment systems.

- These controllers come with expansion boards installed, which are necessary for equipment production together with the alignment software developed by Sigma Koki.
- The desktop type FAPC comes with the alignment software ASS-02 installed, and the rack mount type FAPC comes with ASS-04 installed.



Main Specifications

OS	Windows®7
Motion 4axis/1	MC8042P (manufactured by NOVA electronics, Inc.) 4-axis independent control
Motion 8axis/1	MC8082P (manufactured by NOVA electronics, Inc.) 8-axis independent control
AD	PCI-3155 (manufactured by Interface Corporation)/16 bit high speed AD conversion/Single end 16CH, differential 8CH input
GP-IB	PCI-4304 (manufactured by Interface Corporation) IEE 488 compliant GP-IB 1CH type equipped with FIFO

* Option
PCI-2726CM (manufactured by Interface Corporation) (This board can be added when the number of inputs/outputs exceeds the inputs/outputs of the standard driver box.)

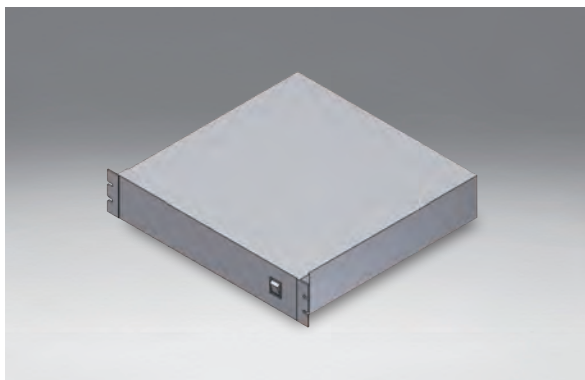
- Sink type current drive photocoupler 32 inputs
- Sink type high current open collector 32 outputs

Specifications

Part Number	Axis	Software
SMC-04A2	4 axes	ASS-02
SMC-08A2	8 axes	ASS-02
SMC-08A4	8 axes	ASS-04
SMC-12A4	12 axes	ASS-04
SMC-16A4	16 axes	ASS-04

SDB
Catalog Code W2036

- Low-profile 19-inch rack mount type.
- These micro-step driver boxes have the same shape, emphasizing extensibility.
- Compact design achieved by built-in drive power supply.
- Capable of setting 16 types of micro-steps, allowing high precision control according to the application.
- It is shipped with such as remote control for peripheral devices, the driving of the solenoid valve, signal tower display, and digital IO required for production equipment.



Specifications

Part Number	Axis	A [mm]	B [mm]
SDB-04	4 axes	31.8	44
SDB-08	8 axes	76.2	88

Outline Drawing

(in mm)

