

# Small Pedestal Adapters Dog Point Set Screws / Thread Adapters

SPS-SP  
SC/CHS

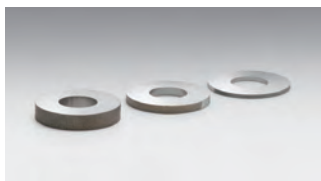
## SPS-SP

RoHS

Catalog Code

W6080

Adapter plates attach to the top of Pedestal Bases to adjust the height of an optical system or unit.

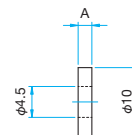


Specifications			Primary material: Stainless Steel Finish: None	
Part Number	A [mm]	Weight [kg]		
SPS-0.5SP	0.5	0.00025		
SPS-1SP	1	0.005		
SPS-2SP	2	0.001		
SPS-2.3SP	2.3	0.0012		
SPS-3SP	3	0.0015		
SPS-4SP	4	0.002		

### Outline Drawing

#### SPS-SP

Dog Point Set Screws  
SC-M4-16EE...1 screw (2SP, 2.3SP only)



## SC

Catalog Code

W6085

Dog Point Set Screws are available in M4 or 8-32UNC thread sizes. They are sold in packs of 10.

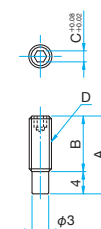


### Guide

- These can be used with the Post (R0-EE/ UU) and the Post Sfaud (PST) family.

### Outline Drawing

SC



### Specifications

Primary material: Steel  
Finish: Chrome plating

Part Number	A [mm]	B [mm]	C	D	Quantity [Pieces]
SC-8U-14UU	14	10	5/64 (2)	8-32UNC	10
SC-8U-16UU	15.6	11.6	5/64 (2)	8-32UNC	10
SC-8U-18UU	17.5	13.5	5/64 (2)	8-32UNC	10
SC-8U-20UU	19.5	15.5	5/64 (2)	8-32UNC	10
SC-8U-21UU	21	17	5/64 (2)	8-32UNC	10
SC-M4-14EE	14	10	2	M4	10
SC-M4-16EE	15.6	11.6	2	M4	10
SC-M4-18EE	17.5	13.5	2	M4	10
SC-M4-20EE	19.5	15.5	2	M4	10
SC-M4-21EE	21	17	2	M4	10

## CHS

Catalog Code

W6084

CHS is a thread adapter with two male sides. The first type has M6P1 on one side and M4 on the other. The imperial version has 1-4/20UNC on one side and 8-32UNC on the other side.



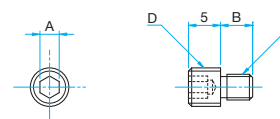
- These adapters come in packs of 10.

### Guide

- These can be used with the Post (R0-EE/ UU) and the Post Sfaud (PST) family.

### Outline Drawing

CHS



### Specifications

Primary material: Stainless Steel  
Finish: None

Part Number	A [mm]	B [mm]	C	D	Quantity [Pieces]
CHS-M4-M6-5	3	5	M4	M6 P1	10
CHS-M4-M6-9	3	9	M4	M6 P1	10
CHS-1/4-8U-5	1/8 (3.2)	5	8-32UNC	1/4-20UNC	10
CHS-1/4-8U-9	1/8 (3.2)	9	8-32UNC	1/4-20UNC	10