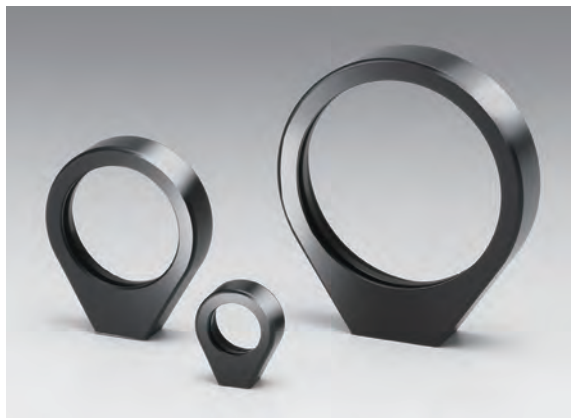


Lightweight and compact fixed lens mount specialized for lenses with thin edge.

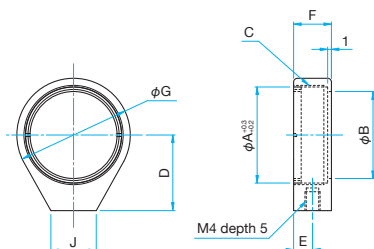
- These holders are best for single convex lenses and a new design resulting in reduced prices.
- Available for lens diameters from 12.7mm to 50.8mm, with either inch or metric threaded mounting hole.
- Since the metal retaining ring is used, powder of the resin does not occur.

**Guide**

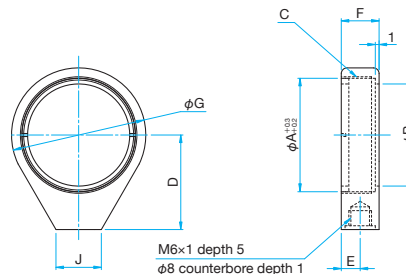
- Post is not included. Purchase posts (RO) and post holders (PST) separately.
 ► [WEB Reference](#) [Catalog Code](#) W6052, [WEB Reference](#) [Catalog Code](#) W6039
- Spacers are available (PS-SP) for use with a post stand (PST) to align the optical axis to inch height. [WEB Reference](#) [Catalog Code](#) W6042
- By using an adapter nut (AND-M6), LHG-30/ LHG-50 / LHG-50.8 can convert its mounting hole pattern into M4 or 8-32UNC.
 ► [WEB Reference](#) [Catalog Code](#) W6078

Attention

- Resin washer is not included. A delrin washer (DR) between the optic and the metal retaining ring is recommended if the optic is made of easily damaged material. [Reference](#) C041
- LHG-12.7, LHG-20, and LHG-25.4 can not be mounted on M6posts. Please use post holders (PST) or M4 posts (ROC).
 ► [WEB Reference](#) [Catalog Code](#) W6039, [WEB Reference](#) [Catalog Code](#) W6052

**Outline Drawing****LHG-12.7/20/25.4**

Part Number	φA (mm)	φB (mm)	C (mm)	D (mm)	E (mm)	F (mm)	φG (mm)	J (mm)
LHG-12.7	φ12.7	φ11.5	M13.55×0.75	12.7	3.5	7.5	φ17.5	7
LHG-20	φ20	φ17.5	M20.85×0.75	20	5	10	φ25	12
LHG-25.4	φ25.4	φ23	M26.25×0.75	20	5	10	φ30	12

LHG-30/50/50.8

Part Number	φA (mm)	φB (mm)	C (mm)	D (mm)	E (mm)	F (mm)	φG (mm)	J (mm)
LHG-30	φ30	φ27	M30.85×0.75	25	5	10	φ35.5	12
LHG-50	φ50	φ46	M50.85×0.75	35	6.5	12.5	φ55.8	20
LHG-50.8	φ50.8	φ47	M51.65×0.75	35	6.5	12.5	φ55.8	20

Specifications

Primary material: Aluminum
Finish: Black anodized

Part Number	Compatible Optics		Clear Aperture φB [mm]	C	Optical Axis Height D [mm]	Weight [kg]
	Diameter φA [mm]	Thickness [mm]				
LHG-12.7	φ12.7	2 – 5.4	φ11.5	M13.55 P0.75	12.7	0.0032
LHG-20	φ20	2 – 7	φ17.5	M20.85 P0.75	20	0.0088
LHG-25.4	φ25.4, φ25	2 – 7	φ23	M26.25 P0.75	20	0.0085
LHG-30	φ30	2 – 7	φ27	M30.85 P0.75	25	0.012
LHG-50	φ50	2 – 9	φ46	M50.85 P0.75	35	0.0263
LHG-50.8	φ50.8	2 – 9	φ47	M51.65 P0.75	35	0.024